

CERTIFICATE OF LOCATION OF GOVERNMENT CORNER

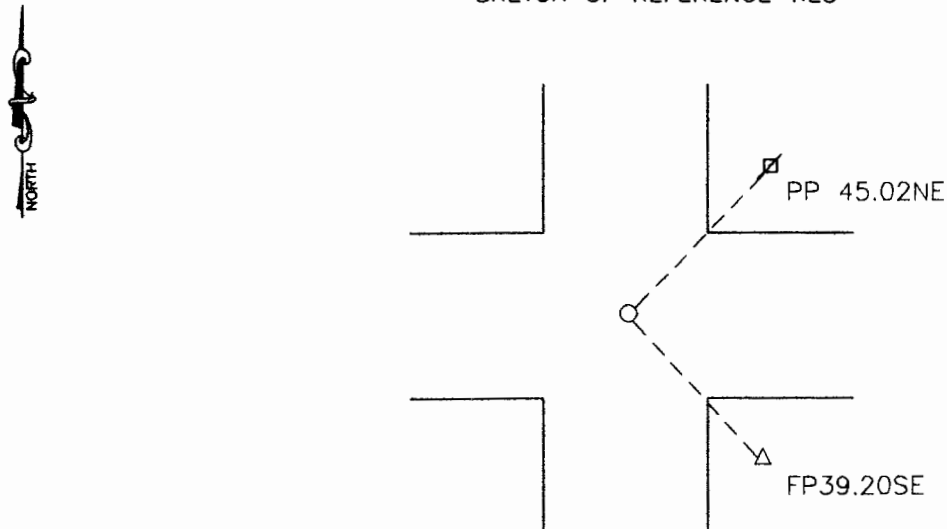
Northeast Corner of Section 31, Township 108, Range 43, 5th P.M.

STATE OF MINNESOTA, County of Murray

At the corner location shown on the sketch:

- On 10-6-2000 found a 12x8x3 inch stone
DATE
- left monument as found, lowered monument, removed monument (explain)
- On 10-6-2000 placed a 5/8th inch rerod with seal #11943 at road surface
DATE

SKETCH OF REFERENCE TIES



Nail and Seal in power pole 45.02 NE
Nail and seal in post next to telephone ped SE

Statement of evidence relative to this corner location is on back of page.

I hereby certify that this document and the data contained herein was prepared by me or under my direct supervision.

Dyle C Mooring 10/09/00
SIGNATURE DATE

Registration No. 11943
 Land Surveyor, Professional Engineer
 County Surveyor, County Engineer

OFFICE OF THE COUNTY RECORDER

County of _____
I hereby certify that this document was filed in the Co. Recorders office at _____ .M on the _____ day of JAN 10 2001 A.D. 19 _____

County Recorder _____
By _____, Deputy
DOCUMENT NO. _____

Statement of Evidence

On October 6, 2000 Moseng Land Surveying, Kieth Steenster, and Bob Vos dug with backho and found a 12x8x3 inch stone with 4 smaller stones around it. As we were digging we came across pieces of iron that were above the stone. Rerods were placed around the stone. Then we placed iron w/seal #11943 on top of the stone at road surface.